



EVIDENCE: ROM_0001_EN

Title	Lady Hamilton as "Medea"
Subtitle	Oil on canvas
Author	George Romney
Date / Historical era	1786 / Modern Era
Theme(s)	Hubris & Excessive Passion
Character(s)	Medea
Language	EN
Description	The painting shows a young woman with wild, wind-tossed hair and a tense, startled expression, her hands drawn close to her chest as she turns towards something unseen. Her dramatic pose and vivid emotion evoke her performance of Medea, capturing the sorceress in a moment of agitation and inner turmoil.

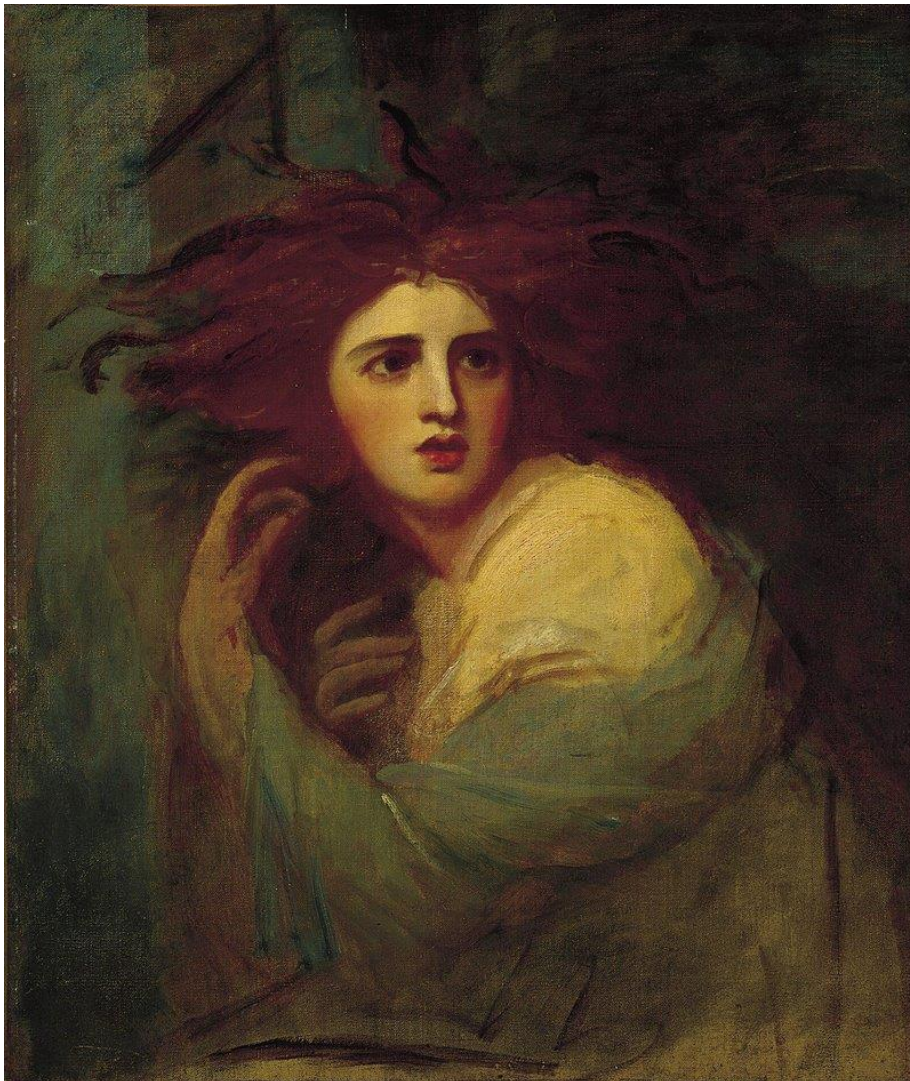


Co-funded by
the European Union

Project number :
2024-2-FR01-KA210-SCH-000295678

The European Commission's support for the production of this publication does not constitute an endorsement of the contents, which reflect the views only of the authors, and the Commission cannot be held responsible for any use which may be made of the information contained therein.

Reproduction



Co-funded by
the European Union

Project number :
2024-2-FR01-KA210-SCH-000295678

The European Commission's support for the production of this publication does not constitute an endorsement of the contents, which reflect the views only of the authors, and the Commission cannot be held responsible for any use which may be made of the information contained therein.